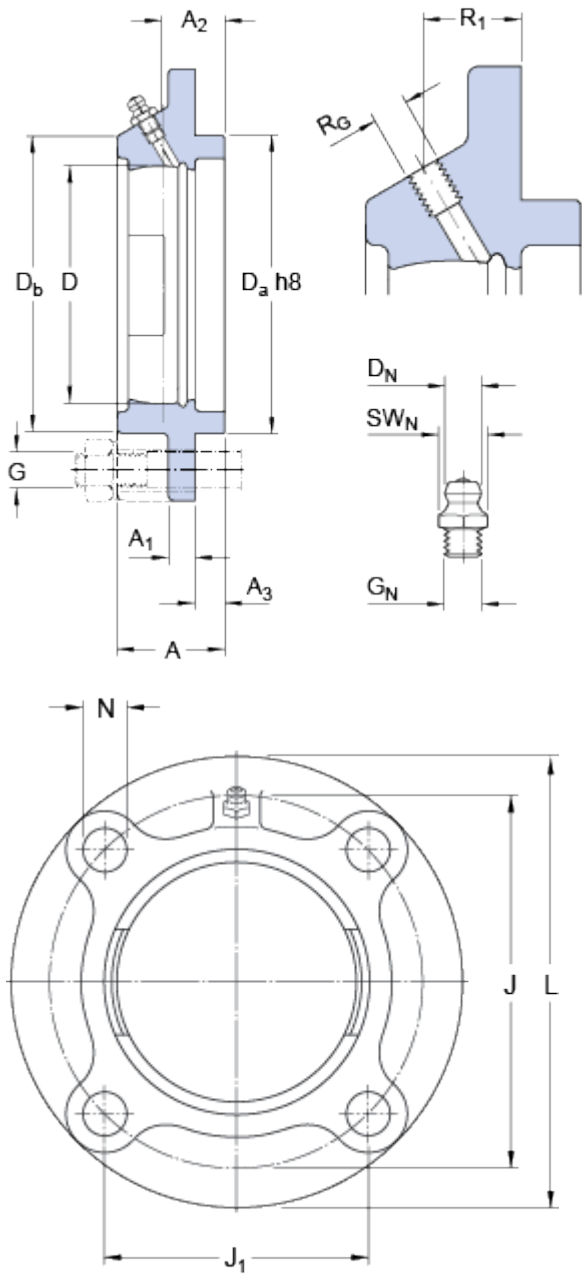


FYC 512

Material Cast iron

Dimensions



D	110	mm
D _a	135	mm
D _b	137.1	mm
A	48	mm
A ₁	15	mm
A ₂	29	mm
A ₃	12	mm
J	160	mm
J ₁	113.1	mm
L	195	mm
N	19	mm

Threaded hole

R _G	1/4-28 UNF	
R ₁	24.5	mm

Grease fitting

D _N	6.5	mm
SW _N	7	mm
G _N	1/4-28 SAE-LT	

Mass

Mass housing 3.45 kg

Mounting information

Recommended diameter for attachment bolts, mm G 16 mm

Recommended diameter for attachment bolts, inch G 0.625 in