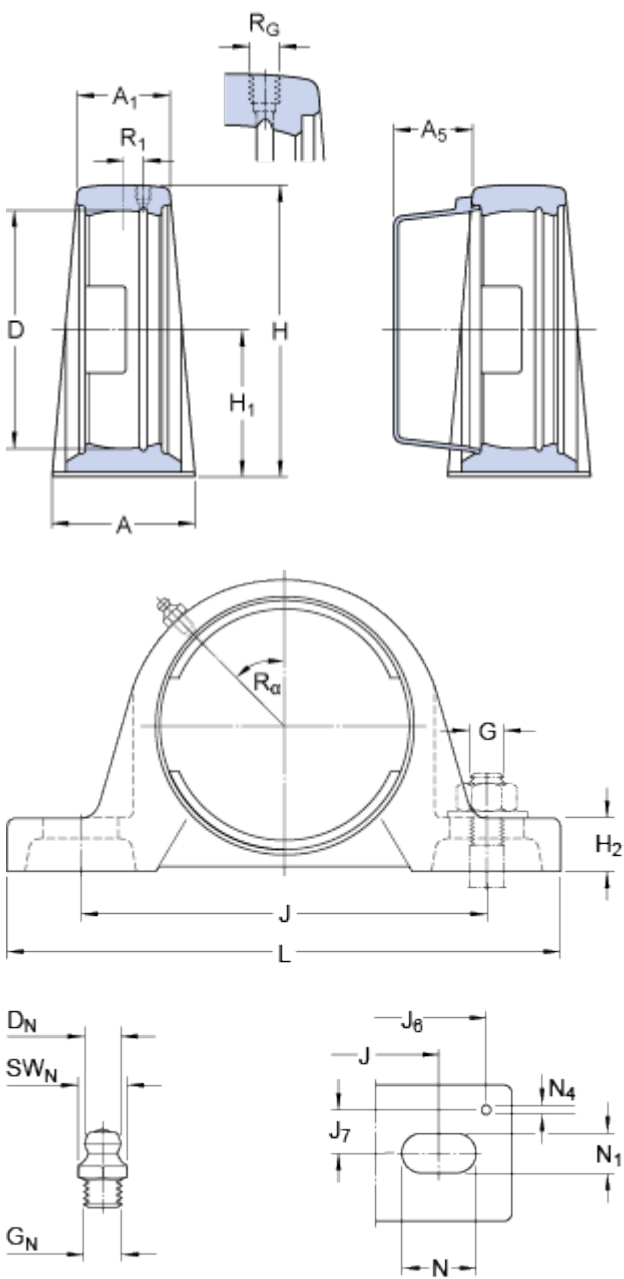


SY 512 M

Material Cast iron

Dimensions



D	110	mm
H ₁	69.9	mm
A	60	mm
A ₁	42	mm
A ₅	35.5	mm
H	137.5	mm
H ₂	26.5	mm
J	190.5	mm
J	max. 202	mm
J	min. 179	mm
L	240	mm
N	29.5	mm
N ₁	18	mm

Threaded hole

R _G	1/4-28 UNF	
R ₁	5.5	mm
R _α	45	°

Grease fitting

D _N	6.5	mm
SW _N	7	mm
G _N	1/4-28 SAE-LT	

Dowel pins

J ₆	222	mm
J ₇	21	mm
N ₄	4	mm

Mass housing

3

kg

Mounting information

Recommended diameter for attachment bolts, mm

G

16

mm

Recommended diameter for attachment bolts, inch

G

0.625

in

Associated products

End cover

ECY 212
