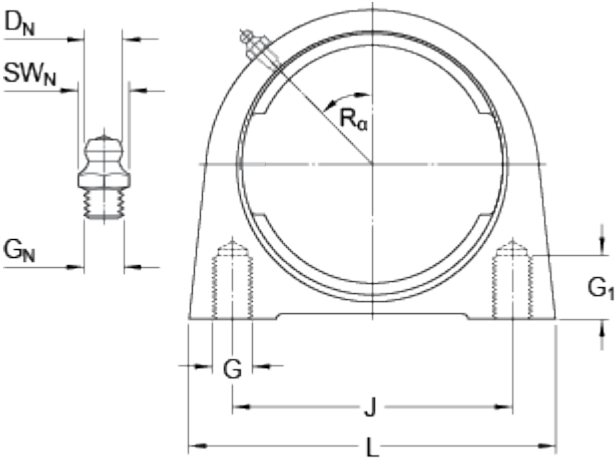
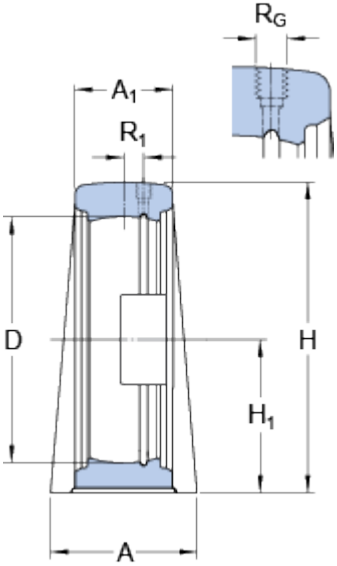


SYF 505

Material Cast iron

Dimensions



D	52	mm
H ₁	36.5	mm
A	36	mm
A ₁	22	mm
H	70	mm
J	50.8	mm
L	70	mm

Threaded hole

R _G	1/4-28 UNF
R ₁	2 mm
R _α	45 °

Grease fitting

D _N	6.5	mm
SW _N	7	mm
G _N	1/4-28 SAE-LT	

Mass

Mass housing	0.37	kg
--------------	------	----

Mounting information

Housing thread for attachment bolts	G	M10
Thread length	G ₁	15 mm