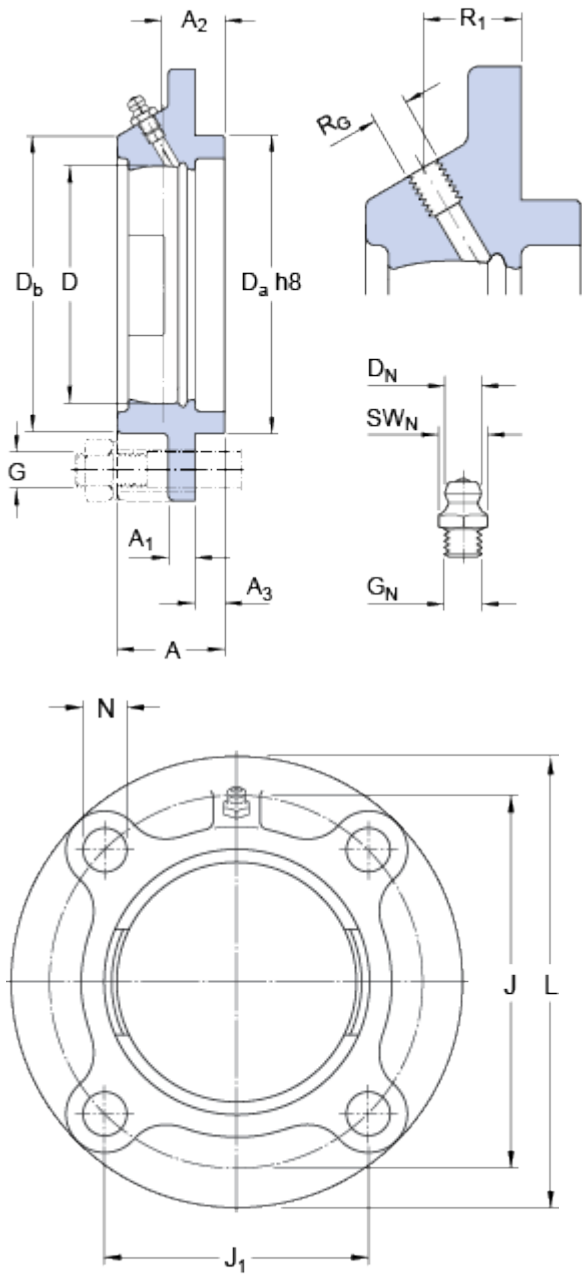


FYC 506

Material Cast iron

Dimensions



D	62	mm
D _a	80	mm
D _b	81.1	mm
A	31	mm
A ₁	8	mm
A ₂	18	mm
A ₃	8	mm
J	100	mm
J ₁	70.7	mm
L	125	mm
N	12	mm

Threaded hole

R _G	1/4-28 UNF
R ₁	16.5 mm

Grease fitting

D _N	6.5 mm
SW _N	7 mm
G _N	1/4-28 SAE-LT

Mass

Mass housing 0.95 kg

Mounting information

Recommended diameter for attachment bolts, mm	G	10	mm
Recommended diameter for attachment bolts, inch	G	0.375	in