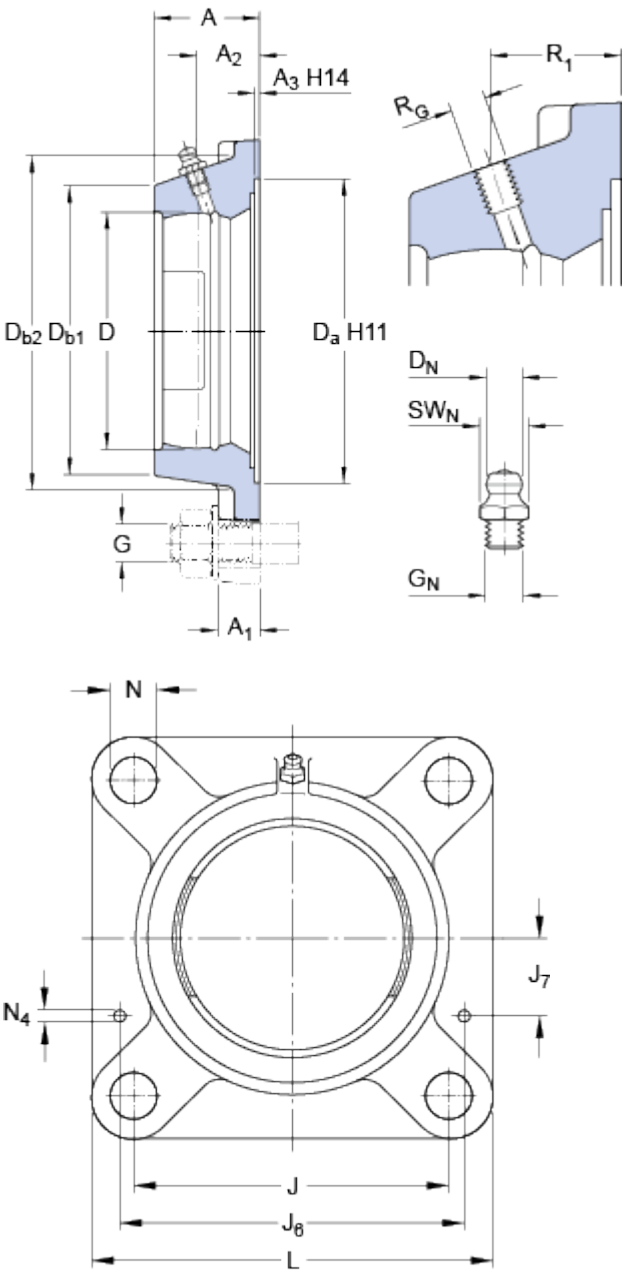


FY 503 M

Material Cast iron

Dimensions



D	40	mm
D _a	55.6	mm
D _{b1}	50	mm
D _{b2}	53	mm
A	26	mm
A ₁	11	mm
A ₂	17	mm
A ₃	3.2	mm
J	54	mm
L	76	mm
N	11.5	mm
Threaded hole		
R _G	1/4-28 UNF	
R ₁	19	mm
Grease fitting		
D _N	6.5	mm
SW _N	7	mm
G _N	1/4-28 SAE-LT	
Dowel pins		
J ₆	66	mm
J ₇	14.5	mm
N ₄	4	mm

Mass

Mass housing 0.28 kg

Mounting information

Recommended diameter for attachment bolts, mm G 10 mm

