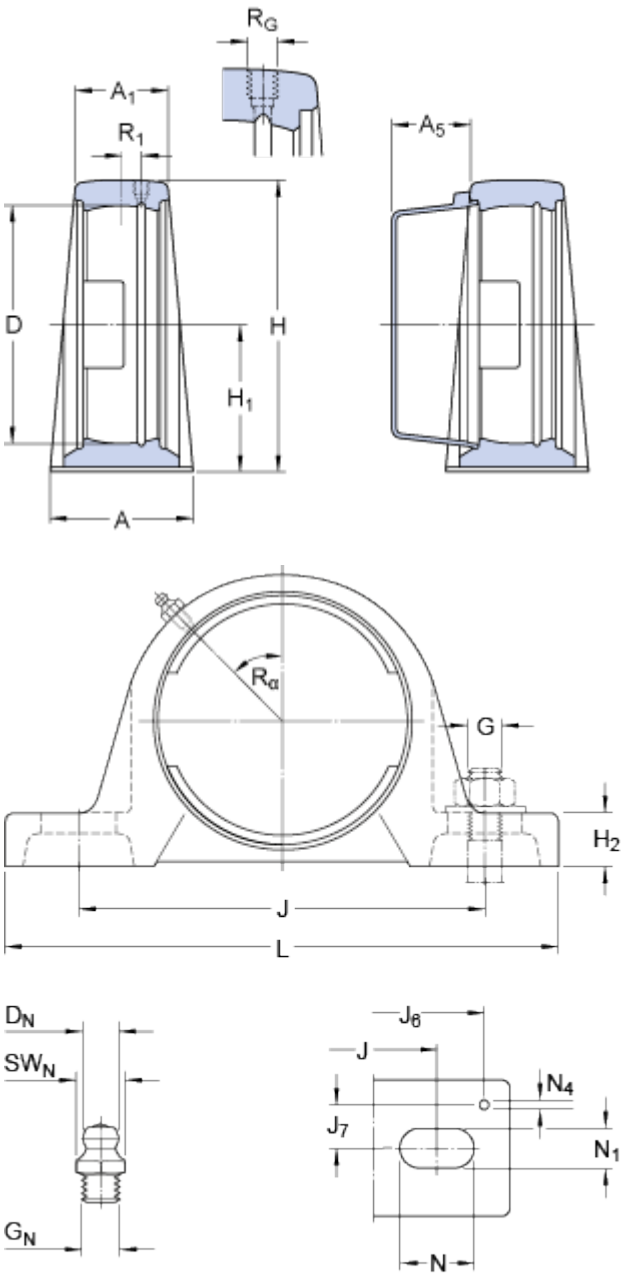


SY 510 M

Material

Cast iron

Dimensions



D	90	mm
H ₁	57.2	mm
A	54	mm
A ₁	34	mm
A ₅	29.5	mm
H	114	mm
H ₂	22	mm
J	157	mm
J	max. 165	mm
J	min. 149	mm
L	203	mm
N	26	mm
N ₁	18	mm

Threaded hole

R _G	1/4-28 UNF	
R ₁	4	mm
R _α	45	°

Grease fitting

D _N	6.5	mm
SW _N	7	mm
G _N	1/4-28 SAE-LT	

Dowel pins

J ₆	187	mm
J ₇	19	mm
N ₄	4	mm

Mass housing

1.9

kg

Mounting information

Recommended diameter for attachment bolts, mm

G

16

mm

Recommended diameter for attachment bolts, inch

G

0.625

in

Associated products

End cover

ECY 210
