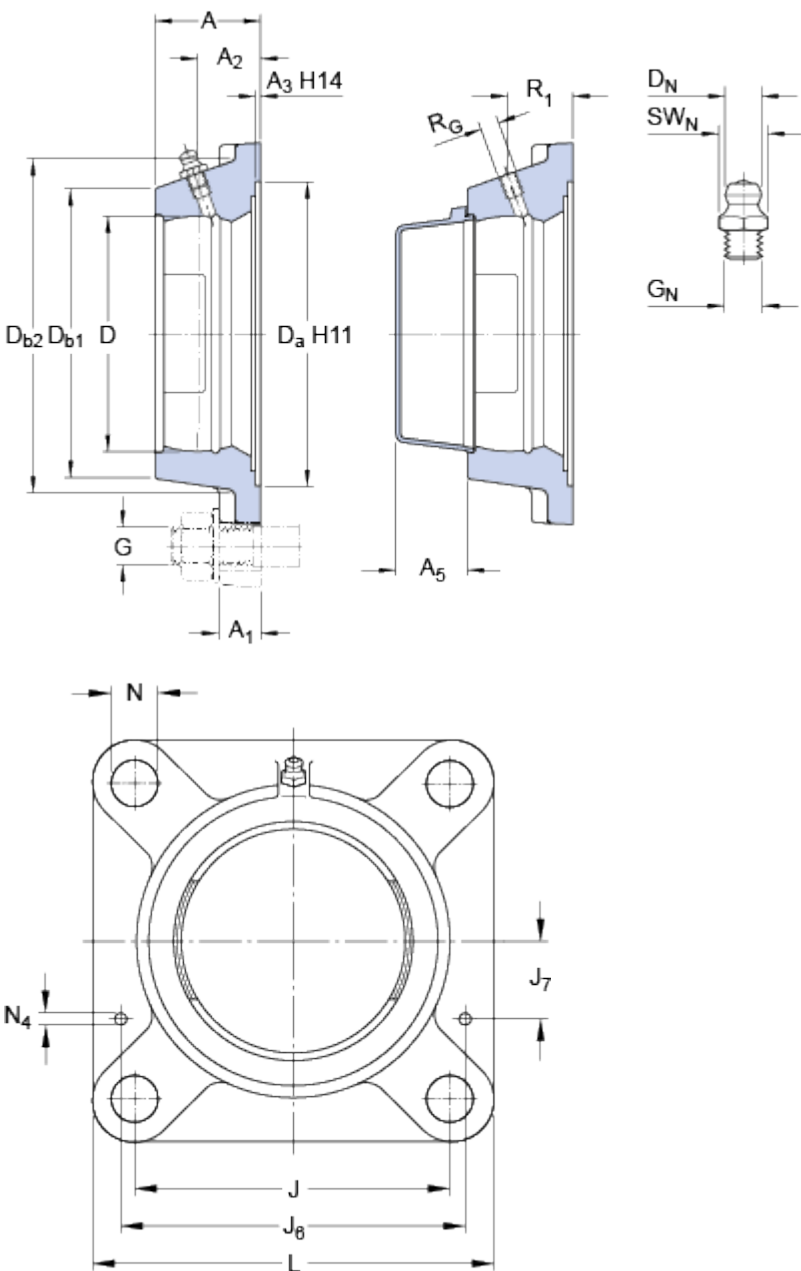


FY 511 M

Material Cast iron

Dimensions



D	100	mm
D _a	150.8	mm
D _{b1}	122	mm
D _{b2}	134	mm
A	47.5	mm
A ₁	16	mm
A ₂	31	mm
A ₃	3.2	mm
A ₅	34	mm
J	130	mm
L	162	mm
N	18	mm

Threaded hole

R _G	1/4-28 UNF	
R ₁	32	mm

Grease fitting

D _N	6.5	mm
SW _N	7	mm
G _N	1/4-28 SAE-LT	

Dowel pins

J ₆	148	mm
J ₇	45	mm
N ₄	4	mm

Mass

Mass housing 2.25 kg

Mounting information

Recommended diameter for attachment bolts, mm	G	16	mm
Recommended diameter for attachment bolts, inch	G	0.625	in

Associated products

End cover	ECY 211
-----------	---------
