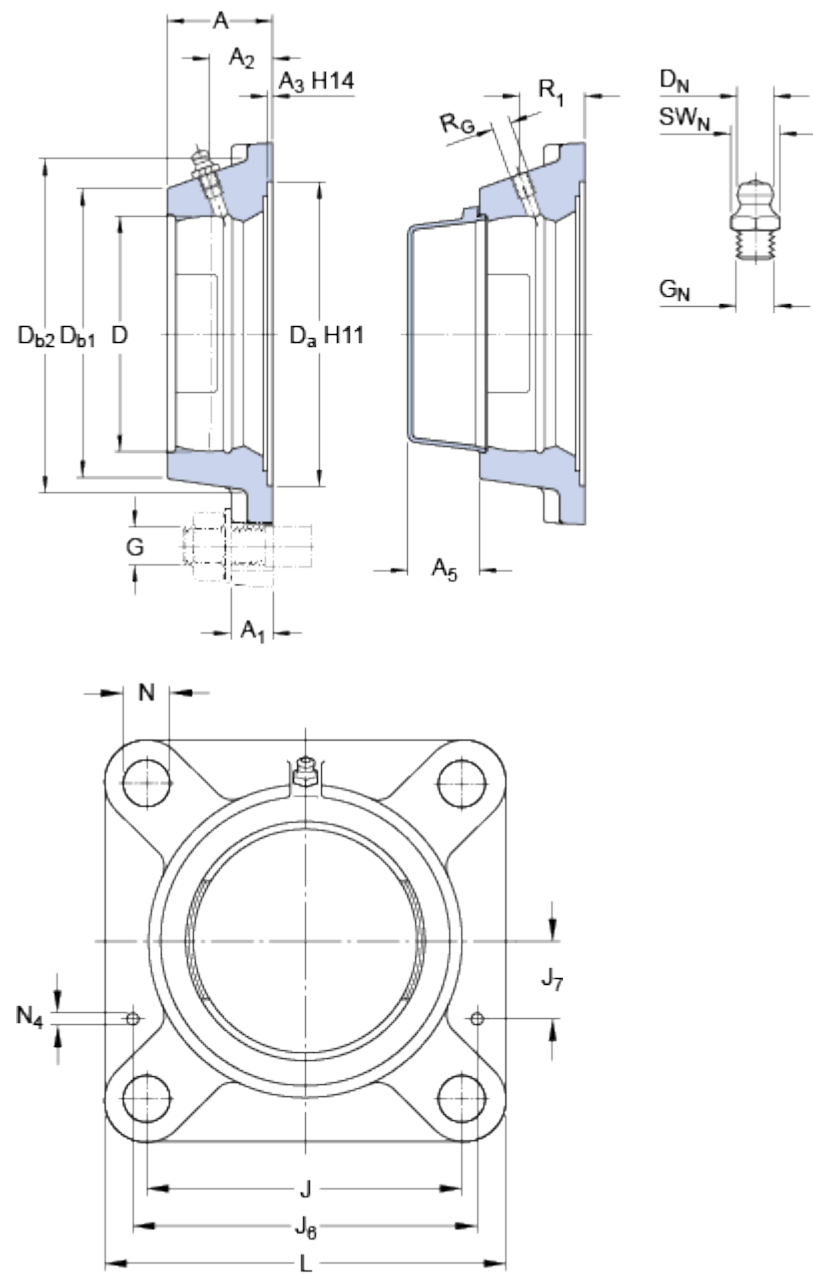


FY 506 M

Material	Cast iron	
----------	-----------	--

Dimensions



D	62	mm
D _a	93.7	mm
D _{b1}	76	mm
D _{b2}	84	mm
A	32.5	mm
A ₁	13	mm
A ₂	20	mm
A ₃	3.2	mm
A ₅	20	mm
J	82.5	mm
L	108	mm
N	11.5	mm

Threaded hole

R _G	1/4-28 UNF	
R ₁	21	mm

Grease fitting

D _N	6.5	mm
SW _N	7	mm
G _N	1/4-28 SAE-LT	

Dowel pins

J ₆	96	mm
J ₇	24.5	mm
N ₄	4	mm

Mass

Mass housing	0.73	kg
--------------	------	----

Mounting information

Recommended diameter for attachment bolts, mm	G	10	mm
Recommended diameter for attachment bolts, inch	G	0.375	in
Associated products			
End cover	ECY 206		